

302 Epoxy Repair Cement

302 Epoxy Repair Cement is a high performance two pack solvent free epoxy fairing compound. The material is ideal for use on metallic surfaces and has been designed to be applied to manually prepared substrates. The material can be applied by trowel to large areas where excessive corrosion pitting is prevalent on the repair surface. Once cured the product can be over coated by many standard epoxy, acrylic and polyurethane systems.

Typically the material is used in conjunction with Resimac composite repair systems as a cost effective surface filler prior to application of 301 Epoxy Resin and Glass Tape

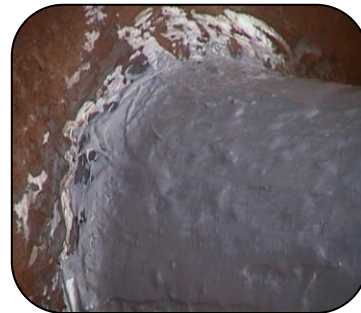


Main characteristics -

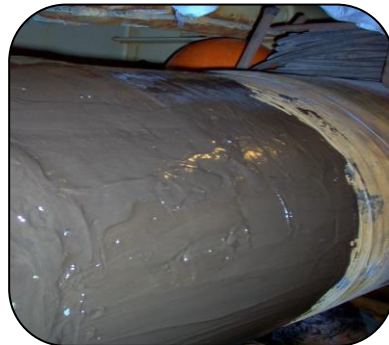
- Two component
- Solvent free epoxy
- 1:1 mixing ratio
- Usable life 25 minutes (20°C)
- Touch dry 90 mins (20°C)
- Full cure 3 days (20°C)
- Tolerant of less than ideal surface preparation
- Applied by spatula, trowel or applicator tool
- Available in 1kg and 40kg pack sizes

Mechanical Properties –

Adhesion	129kg/cm ² (1830psi) Manual
Tensile Shear to ASTM D1002	865kg/cm ² (12300psi) Blast Steel
Compressive strength	
Tested to ASTM D 695	735kg/ cm ² (10,450psi)
Corrosion Resistance	
Tested to ASTM B117	Minimum 5000 hours
Flexural Strength	
Tested to ASTM D790	298kg/cm ² (4250psi)
Heat Resistance	
Intermittent contact with steam up to 120° (when used with glass tape, dry heat with to 150°C.	



Oil intake pipe badly corroded, all surfaces filled using 302 Epoxy Repair Cement



Badly corroded ballast pipe manually prepared and filled using 302 Epoxy Repair Cement, 30mtr length of pipe then encapsulated using 301 Epoxy Resin and Hardener and Glass Tape